

Adept Group Limited, Inc.

# Superior Views of Product Development

**PortView™** *An easy-to-use tool for charting product development portfolios*

**Adept Group Clients**

- Akzo-Nobel
- AlliedSignal
- Ameritech
- Appleton Papers
- Ashland Chemical
- AT&T
- Bausch & Lomb
- Black & Decker
- Blue Cross Blue Shield
- Calgon Carbon
- Ciba Specialty Chemicals
- Corning
- Dow Chemical
- DuPont
- Eastman Chemical
- Eaton
- Exxon Chemical
- Hercules
- Johnson & Johnson
- Kodak
- Kraft
- L & F Products
- Lucent
- McNeil Labs
- Mead Paper
- Milliken
- Nabisco
- Novell
- Pitney Bowes
- Polaroid
- Praxair
- Procter & Gamble
- Raychem
- Reynolds Metals
- S.C. Johnson
- Senco
- Shell Chemical
- Stanley Tools
- US West
- W.R. Grace



Portfolio and Pipeline Management is absolutely critical to productivity in marketing, technology management, and product development. The key, though, is to engage top management in consistent practices. Managers can do this by creating good graphical views that use metrics needed to make tough trade-off decisions. The challenge is to reveal insights and information, without confusing people.

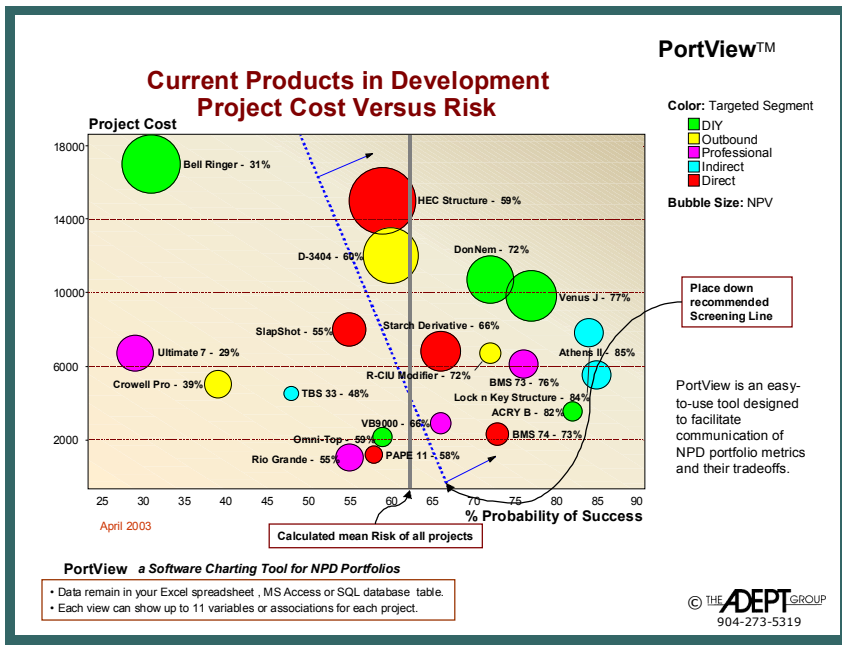
PortView™ couples an easy-to-use interface and straightforward statistical analysis with Adept Group's deep knowledge of Portfolio and Pipeline Management.

Access Business Group	Datex-Ohmeda	Markem
Ralston Purina	Algonquin Auto	Dow Chemical
Micro Encoder	Silicon Graphics	Dana
Appleton	Omnova Solutions	Square D
BASF Corporation	Pfizer	Sunbeam
BNY Clearing	Johnson and Johnson	Pharmacia
Timken	Cerner	Johnson Controls
Porter-Cable	US Filter	Intel

**... consider some of the users of PortView™**

PortView™ is a desktop application for creating such views. It enables users to create, display, and share superior views of any and all metrics. The results are powerful. PortView™ delivers outstanding views of portfolio metrics that easily engage top management.

**The terrific news is that PortView™ is priced to put on a credit card.**



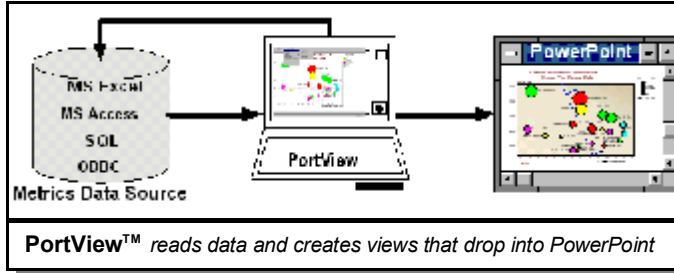
Copyright 2003 The Adept Group Limited, Inc.

Request a demo copy. Email: [PortView@adept-plm.com](mailto:PortView@adept-plm.com)

# Superior Views of Product Development

Request a demo copy.  
email: [PortView@adept-plm.com](mailto:PortView@adept-plm.com)

## PORTVIEW™



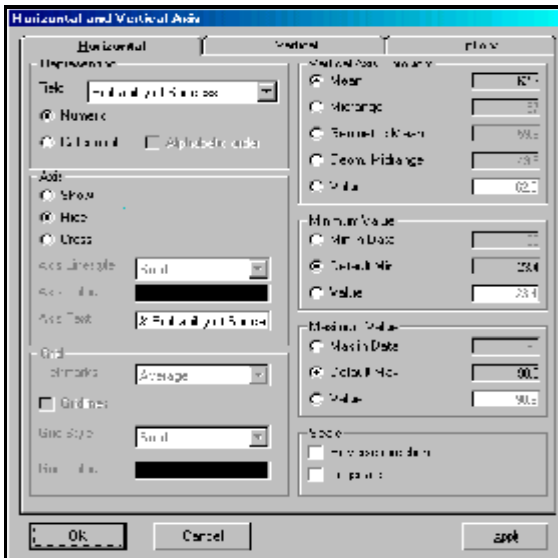
For those who learn on their own, PortView™ has an extensive help system. Yet, the user interface is so intuitive, that anyone who knows what a spreadsheet looks like can be an expert with PortView™ in just a thirty-minute explanation over the phone.

If you are interested in this powerful tool, please request a download of the fully functioning PortView™ demo. The demo's restriction is only in the number of projects displayed at any given time. All other functionality is available to the user. To receive the download of the demo version of PortView™, please email a request to [PortView@adept-plm.com](mailto:PortView@adept-plm.com).

### Using PortView™

PortView™ reads the data from its source (e. g., an MS Excel spreadsheet). Next, users merely assign the variables or data fields to how they wish to view them. Once the view looks the way the user wishes, they simply save it, print it, or create a PowerPoint slide from it. Because PortView™ creates Microsoft Windows Metafiles (wmf), users also have full editing capabilities over every detail of views from within PowerPoint... resize, group, change fonts, recolor and even publish to the web.

1. Read your PPM data / metrics into PortView™
2. Create your view in PortView™
3. Create a PowerPoint slide of the portfolio view



**PortView™: An intuitive and easy-to-use interface**

### PortView™ offers many unique features, tremendously valuable in Portfolio Management

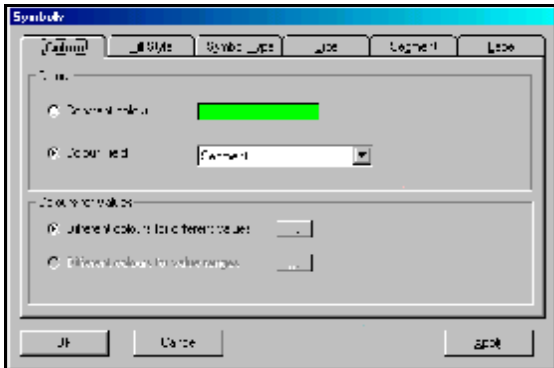
- Direct creation of MS PowerPoint slides. Also enables insertion of views into MS Word for full text reports.
- Ease-of-use, with many pre-established and optimal defaults
- Handling and filtering of metrics, with no restriction on the number of projects included.
- On-screen display of "drill down" project metrics and information.
- Direct creation of MS PowerPoint slides. Also enables insertion of views into MS Word for full text reports.
- Zoom for closer-in views. Axes and all variables instantly adjust.
- Reads a data source into array (in your computer's memory) for extremely fast data manipulation. Data source is not disrupted. Quick changes made to data within PortView™ may be saved as a separate data file.
- Enables plotting of Strategic Groups, such as target markets, project types and technology platforms
- Enables charting of Strategic Buckets and their statistical summaries.
- Direct-to-chart display of labels (names next to each bubbles)... built-in algorithmic separation of text so that there is no overlay of labels Fast and easy use of templates.
- Simply click on next month's data for next month's view.
- Setting and using Strategic Bucket or grouping values as axes (categorical axes). For example, using "stage of development" along an axis.
- Dividing data fields into ranges of "n-tiles" (e.g., quartiles).
- Displaying calculated data on Strategic Buckets (means, data ranges, etc.) into both views and data tables.
- Using data to show "Projection Vectors" that visually communicate dynamic changes over time (e.g., this project is moving in this direction)
- Conditional screening of metrics (for example: show projects from one specific business unit... click and show projects from another business unit) % profit, Marketing as % of FTE, % growth rate)
- Extremely fast editing of views with MS office style "undo" to help correct mistakes

Request a demo copy. Email: [PortView@adept-plm.com](mailto:PortView@adept-plm.com)

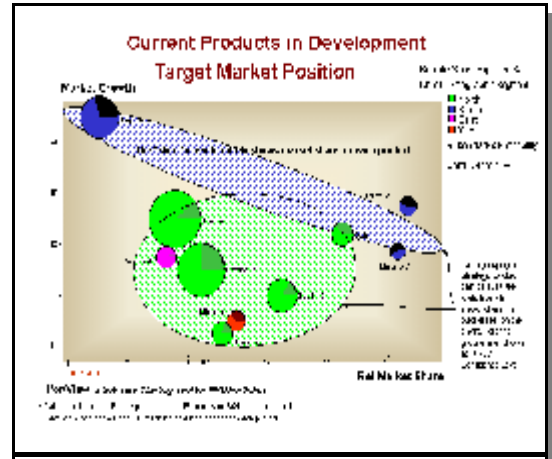
# Superior Views of Product Development

Request a demo copy.  
email: [PortView@adept-plm.com](mailto:PortView@adept-plm.com)

# PORTVIEW™



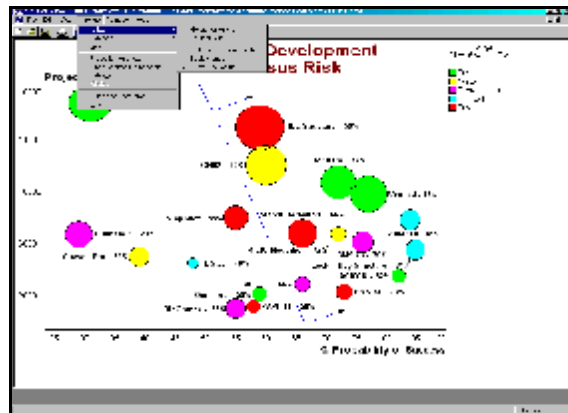
Simply assign fields (columns in Excel) to properties of the chart or symbol being displayed.



Create views of strategic groupings (buckets). Show statistical overviews of sets of projects

*One satisfied user said:*  
"PortView deserves to be marketed as creating charts that increase the perceived IQ of users by at least 40 points!"

Receive a fully functioning demo, free of charge.



Work from within the graphical view mode to fine tune and highlight the chart

Contact us to learn more about PortView and how it will help you with NPD Portfolio and Pipeline Management

**THE ADEPT GROUP**  
226-5 Solana Road  
Suite 224  
Ponte Vedra Beach, FL 32082  
Tel: 904-273-5319  
[paul.oconnor@adept-plm.com](mailto:paul.oconnor@adept-plm.com)

PortView is a trademark of The Adept Group Limited, Inc.

Request a demo copy. Email: [PortView@adept-plm.com](mailto:PortView@adept-plm.com)